



About the Maryland Developmental Disabilities Council

More than 7.57 million Americans – including more than 100,000 Marylanders – have developmental disabilities: lifelong disabilities such as cerebral palsy, autism, epilepsy, and intellectual disabilities that develop at birth or before age 22.

The Maryland Developmental Disabilities Council works to create change to make it possible for people with developmental disabilities to live the lives they want with the support they need.



Investing in the Community

The Council is a good steward of federal dollars with a strong return on investment. Every year, the Council invests more than \$800,000 into the community. **In FY24, the Council invested \$831,338 in Maryland.** We engaged 21,743 people on Council projects and drove change on 257 collaborations, policies, and leaders. Using fair market estimates of our services, we saved the State of Maryland \$558,052 in personnel and training costs.

The Council creates a strong return on investment with the following strategies:

- **The Council supports families.** In FY24, we did that by providing training to 4,085 families of people with developmental disabilities. Council-funded trainings and resources help keep more working-age adults employed, contributing to tax revenue and economic growth.
- **The Council advises state leaders.** The Council advises leaders across Maryland on cost-effective policy and program solutions. In FY24, we did this 257 times. One area we drive savings is state-run institutional care, which cost Maryland taxpayers an average of \$615,000+ per person per year. We advocate for home- and community-based services (HCBS) that cost a fraction of that.
- **The Council keeps people healthy and safe.** The Council invests in self-advocacy and community-based support programs, reducing emergency room visits and crisis interventions. In FY24, we trained 3,041 people with developmental disabilities to be better advocates. Research finds that taxpayers save an estimated \$5.60 for every \$1 invested in preventative services that keep individuals out of high-cost emergency care.



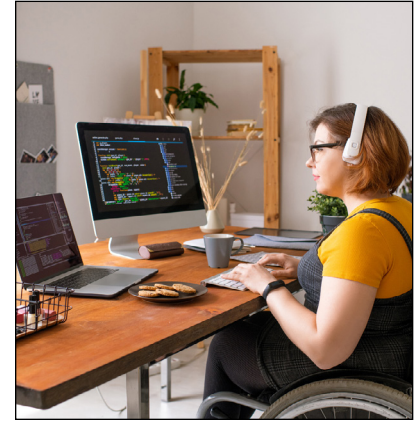
What Does Our Impact Look Like?

Building the Workforce

The Council promotes policies and programs that support people with developmental disabilities to work in their communities. This helps build the workforce and the Maryland economy.

Employment programs also provide a good return on investment of public dollars. **Every \$1 invested in employment programs for people with developmental disabilities results in \$3.90 in tax revenue.**

As the result of Council funding, 130 people found competitive employment and 200 people are more engaged in the communities through structure supports when not working.



More Independence with Fewer Taxpayer Dollars

The Council drives cost-effective policy and program solutions that reduce dependency on more expensive services. **Institutional care costs Maryland taxpayers an average of more than \$615,000 per person per year.**

The Council played a substantial role in bringing about the closure of Maryland's largest institution for people with developmental disabilities. Following the closure, the average annual service cost per person dropped over \$50,000.

The Council advocates for people with developmental disabilities to be in the community, not institutions. Living in the community with supports costs the state \$106,744 per person per year.

Strengthening Veterans and Military Families

The Council advocates for strong families, especially those connected to the Maryland Department of Veterans and Military Families. There are more than 60,000 active duty, National Guard, and reserve members in Maryland and they have about 5,400 children with developmental disabilities.

These families need specific information, resources, and services in order to live and thrive in Maryland. **States save an estimated \$7 for every \$1 invested in family support initiatives.** The Council is developing information and resources targeted to military and veteran families. This work continues in 2025.



Contact the Council for more information:

www.md-council.org | info@md-council.org | 410-767-3670